



**Eduvos**  
Your Education. Your Future.

ONLINE SHORT COURSE:

# Leadership and Emotional Intelligence.

---

Prospectus

# Prospectus Outline.

---

## 01 Living your best life

- > Always start with “why”
  - > Summary of what you can do afterwards
- 

## 02 What you will learn and how to apply it practically

- > Course overview
  - > Course breakdown
  - > Course duration
  - > Course start date
  - > Entry requirements
  - > The cost of your investment
  - > Recognition of Prior Learning (RPL)
  - > Where this short course can take you
- 

## 03 Your online learning experience

- > Lecturers with industry experience
  - > Study guides and textbooks
  - > Assessments
  - > Online support
- 

## 04 Take the next step

- > Process overview
- > Contact us

# 01

## Living your best life

### Always start with "why".

If you have recently become a first line manager (or a team leader, supervisor, junior manager), or if you want to become a manager one day, then this is the ideal course for you.

The course work is practical and can be applied immediately in the working world. You will gain confidence in communicating effectively, defining your leadership style and connecting people to tasks.

## Prospectus Outline.

### NAVIGATION

#### 01 Living your best life

- < Always start with "why"
- > Summary of what you can do afterwards

#### 02 What you will learn and how to apply it practically

- > Course overview
- > Course breakdown
- > Course duration
- > Course start date
- > Entry requirements
- > The cost of your investment
- > Recognition of Prior Learning (RPL)
- > Where this short course can take you

#### 03 Your online learning experience

- > Lecturers with industry experience
- > Study guides and textbooks
- > Assessments
- > Online support

#### 04 Take the next step

- > Process overview
- > Contact us

# Summary of what you can do afterwards.

After completing the short course in Leadership and Emotional Intelligence, you will be able to:

## Understand leadership

Understand leadership in a work context.

## Apply systems approach

Apply a systems approach to decision-making.

## Apply your EQ

Apply your EQ competently to effectively lead yourself and influence others.

## Communicate effectively

Use communication techniques effectively.

## Prospectus Outline. NAVIGATION

### 01 Living your best life

- > Always start with "why"
- < **Summary of what you can do afterwards**

### 02 What you will learn and how to apply it practically

- > Course overview
- > Course breakdown
- > Course duration
- > Course start date
- > Entry requirements
- > The cost of your investment
- > Recognition of Prior Learning (RPL)
- > Where this short course can take you

### 03 Your online learning experience

- > Lecturers with industry experience
- > Study guides and textbooks
- > Assessments
- > Online support

### 04 Take the next step

- > Process overview
- > Contact us

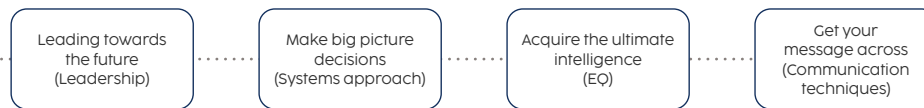
# 02

## What you will learn and how to apply it practically

### Course overview.

The Edivos Leadership and Emotional Intelligence short course provides the junior executive with an opportunity to get ahead and succeed.

Module 1  
**Leadership and emotional intelligence**  
7 weeks | 26 credits



Successful management depends on being able to motivate people to achieve the specific objectives that are required to complete a business task. Motivating people requires both leadership skill, and an understanding of the business system as well as the ability to communicate the task effectively. Effective communication relies heavily on emotional intelligence and this skill enables a manager to connect people to tasks while being humane in the process.

This course is about leadership and learning the practical skill and ability of a person to lead and guide others. Being an effective leader is strengthened by understanding emotional intelligence which is the ability to comprehend and manage your own emotions, and those of the people around you.

## Prospectus Outline.

### NAVIGATION

- 01 **Living your best life**
  - > Always start with “why”
  - > Summary of what you can do afterwards
- 02 **What you will learn and how to apply it practically**
  - < **Course overview**
  - > Course breakdown
  - > Course duration
  - > Course start date
  - > Entry requirements
  - > The cost of your investment
  - > Recognition of Prior Learning (RPL)
  - > Where this short course can take you
- 03 **Your online learning experience**
  - > Lecturers with industry experience
  - > Study guides and textbooks
  - > Assessments
  - > Online support
- 04 **Take the next step**
  - > Process overview
  - > Contact us

# National Certificate: Generic Management overview.

1 year | 162 Credits

(Typically 55-65% of your first year of a Bachelor's degree)



## Prospectus Outline.

### NAVIGATION

#### 01 Living your best life

- > Always start with "why"
- > Summary of what you can do afterwards

#### 02 What you will learn and how to apply it practically

##### < Course overview

- > Course breakdown
- > Course duration
- > Course start date
- > Entry requirements
- > The cost of your investment
- > Recognition of Prior Learning (RPL)
- > Where this short course can take you

#### 03 Your online learning experience

- > Lecturers with industry experience
- > Study guides and textbooks
- > Assessments
- > Online support

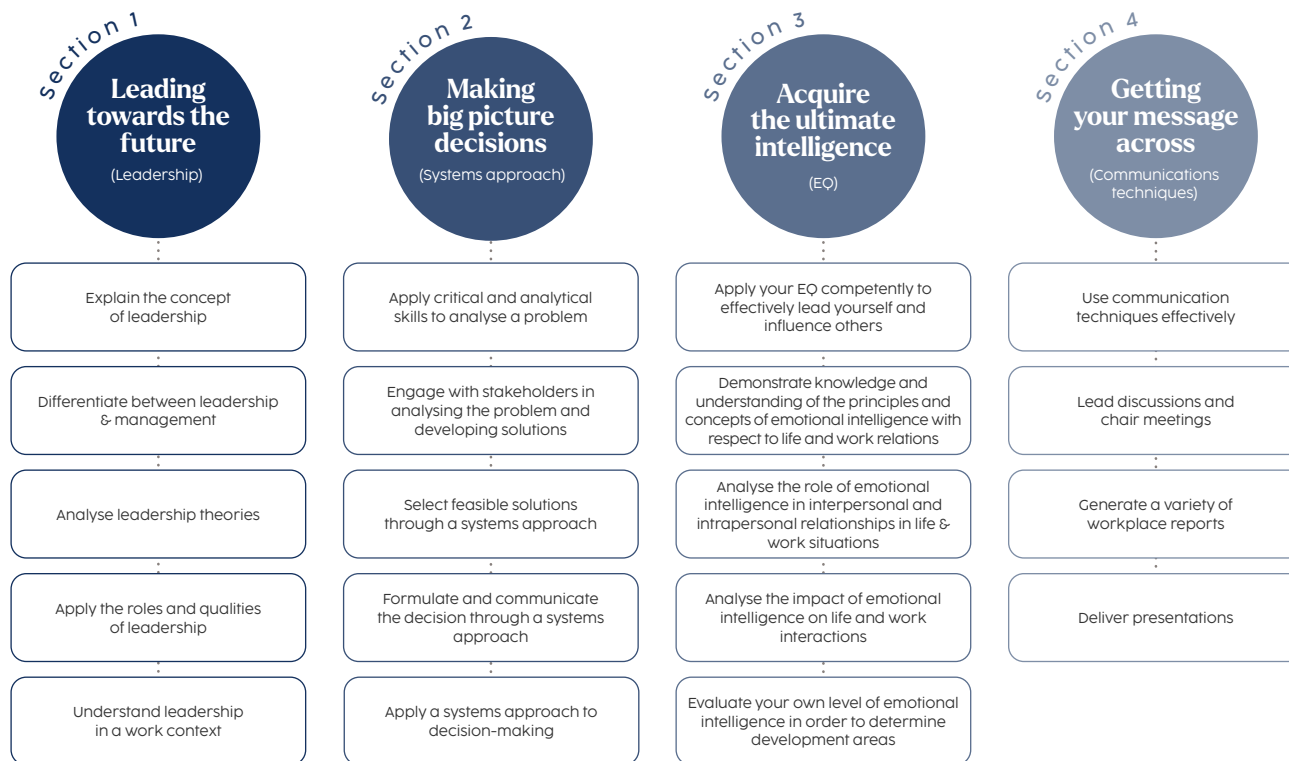
#### 04 Take the next step

- > Process overview
- > Contact us

# Course breakdown.

This short course is a building block to enable a new manager to communicate effectively using reports and other business communication tools. To understand leadership, be able to define their leadership style and follow a systems approach to decision-making.

There are four components to this short course each with its own set of outcomes which you will master during the course.



## Prospectus Outline.

### NAVIGATION

- 01 Living your best life**
  - > Always start with "why"
  - > Summary of what you can do afterwards
- 02 What you will learn and how to apply it practically**
  - > Course overview
  - < **Course breakdown**
  - > Course duration
  - > Course start date
  - > Entry requirements
  - > The cost of your investment
  - > Recognition of Prior Learning (RPL)
  - > Where this short course can take you
- 03 Your online learning experience**
  - > Lecturers with industry experience
  - > Study guides and textbooks
  - > Assessments
  - > Online support
- 04 Take the next step**
  - > Process overview
  - > Contact us

# Course duration.

Students will complete the Leadership and Emotional Intelligence short course online in a 7 week period.

It involves an online learning component, practical workplace application, various videos, structured learning content and assignments online. The student has access to templates and tools to complete the assessments effectively.

Once you have completed all the tasks, assignments and assessments for the short course the student receives feedback on their progress and gets their assessment results (either determined as competent or not yet competent).

## Prospectus Outline.

### NAVIGATION

#### 01 Living your best life

- > Always start with "why"
- > Summary of what you can do afterwards

#### 02 What you will learn and how to apply it practically

- > Course overview
- > Course breakdown
- < **Course duration**
- > Course start date
- > Entry requirements
- > The cost of your investment
- > Recognition of Prior Learning (RPL)
- > Where this short course can take you

#### 03 Your online learning experience

- > Lecturers with industry experience
- > Study guides and textbooks
- > Assessments
- > Online support

#### 04 Take the next step

- > Process overview
- > Contact us





# Course start date.

During 2025 there will be six intakes:

## I N T A K E

1	●	13 Jan 2025	–	1 Mar 2025
2	●	10 Mar 2025	–	26 Apr 2025
3	●	5 May 2025	–	21 Jun 2025
4	●	30 Jun 2025	–	16 Aug 2025
5	●	25 Aug 2025	–	11 Oct 2025
6	●	20 Oct 2025	–	6 Dec 2025

## Prospectus Outline.

### NAVIGATION

- 01 Living your best life**
  - > Always start with “why”
  - > Summary of what you can do afterwards
- 02 What you will learn and how to apply it practically**
  - > Course overview
  - > Course breakdown
  - > Course duration
  - < **Course start date**
  - > Entry requirements
  - > The cost of your investment
  - > Recognition of Prior Learning (RPL)
  - > Where this short course can take you
- 03 Your online learning experience**
  - > Lecturers with industry experience
  - > Study guides and textbooks
  - > Assessments
  - > Online support
- 04 Take the next step**
  - > Process overview
  - > Contact us

# Entry requirements.

Any individual who has a matric certificate or matric equivalent with communication, literacy and mathematics skills at NQF Level 4 can qualify to apply.

As this is an online course, computer literacy is assumed and you will need an email address, access to a computer and access to stable internet.

## Prospectus Outline. NAVIGATION

### 01 Living your best life

- > Always start with "why"
- > Summary of what you can do afterwards

### 02 What you will learn and how to apply it practically

- > Course overview
- > Course breakdown
- > Course duration
- > Course start date
- < **Entry requirements**
- > The cost of your investment
- > Recognition of Prior Learning (RPL)
- > Where this short course can take you

### 03 Your online learning experience

- > Lecturers with industry experience
- > Study guides and textbooks
- > Assessments
- > Online support

### 04 Take the next step

- > Process overview
- > Contact us

# The cost of your investment.

The price of the short course in Leadership and Emotional Intelligence is:

**R 9 000\***  
Monthly: R4 500 per month x 2

Note the cost does not include:

- Cancellation fees: should a student not wish to complete the course but request an early cancellation
- Repeat subject fees: should a student be found not yet competent on a specific module and the student applies to redo the module
- Extension fees: should a student apply for an extension of assessment which would move their assessment to the following intake

# Recognition of Prior Learning.

Eduvos recognises the need for Recognition of Prior Learning (RPL) and this course can be completed (in part or whole) by RPL.

Should a person wish to complete by RPL, the student can apply to be accepted at an additional cost. If the student is not yet competent on the first submission, only one second submission is allowed at a further additional cost.

\*(Excludes once-off R300 application fee)

## Prospectus Outline. NAVIGATION

- 01 Living your best life**
  - > Always start with "why"
  - > Summary of what you can do afterwards
- 02 What you will learn and how to apply it practically**
  - > Course overview
  - > Course breakdown
  - > Course duration
  - > Course start date
  - > Entry requirements
  - < **The cost of your investment**
  - < **Recognition of prior learning**
  - > Where this short course can take you
- 03 Your online learning experience**
  - > Lecturers with industry experience
  - > Study guides and textbooks
  - > Assessments
  - > Online support
- 04 Take the next step**
  - > Process overview
  - > Contact us

# Where this short course can take you.

Upon successful completion you are awarded the much-coveted Eduvos Leadership and Emotional Intelligence Short Course Certificate.

This is recognised by SAQA (South African Qualifications Authority). On successful completion, you will have acquired 26 credits at an NQF (National Qualifications Framework) Level 5.



On the path towards lifelong learning, this certificate articulates and allows you to:

- Enter the National Certificate: Generic Management
- You will be exempt from the module of the same name and automatically receive the 26 credits of the 162 credits needed for this qualification

## Prospectus Outline. NAVIGATION

### 01 Living your best life

- > Always start with “why”
- > Summary of what you can do afterwards

### 02 What you will learn and how to apply it practically

- > Course overview
- > Course breakdown
- > Course duration
- > Course start date
- > Entry requirements
- > The cost of your investment
- > Recognition of Prior Learning (RPL)

### < Where this short course can take you

### 03 Your online learning experience

- > Lecturers with industry experience
- > Study guides and textbooks
- > Assessments
- > Online support

### 04 Take the next step

- > Process overview
- > Contact us

# 03

## Your online learning experience

### Lecturers with industry experience.

Business education involves putting theory into practice and therefore through our exposure to multiple industries, we have assembled a world-class faculty, with exceptional industry experience for you.

Each lecturer will inspire you with their practical experience-based insights, best practices, what works, and what does not. Based on current research trends, we will share with you the best global management practices at work in emerging markets that will open avenues of exploration.

#### Prospectus Outline. NAVIGATION

- 01 **Living your best life**
  - > Always start with "why"
  - > Summary of what you can do afterwards
- 02 **What you will learn and how to apply it practically**
  - > Course overview
  - > Course breakdown
  - > Course duration
  - > Course start date
  - > Entry requirements
  - > The cost of your investment
  - > Recognition of Prior Learning (RPL)
  - > Where this short course can take you
- 03 **Your online learning experience**
  - < **Lecturers with industry experience**
  - > Study guides and textbooks
  - > Assessments
  - > Online support
- 04 **Take the next step**
  - > Process overview
  - > Contact us

# Study guides and textbooks.

- Our study guides include:
- Clear learning outcomes
  - Study materials for the specific subsection
  - Self-contained guide with all module requirements
  - Examples and case studies
  - Activities completed individually or as part of a team

All study materials and textbooks are provided at no additional charge, with 24/7 online access.

# Assessments.

You will complete an online portfolio of evidence for this course. A portfolio of evidence is made up of a range of activities that you will do on your own time (and in the workplace) to show that you are competent in understanding the theory and practice of the module.

Assessment activities vary and may include simple answers to questions, multiple choice, short writing sections, preparation of individual presentations, group presentations, written assignments and summative assessments.

## Prospectus Outline. NAVIGATION

- 01 Living your best life**
  - > Always start with "why"
  - > Summary of what you can do afterwards
- 02 What you will learn and how to apply it practically**
  - > Course overview
  - > Course breakdown
  - > Course duration
  - > Course start date
  - > Entry requirements
  - > The cost of your investment
  - > Recognition of Prior Learning (RPL)
  - > Where this short course can take you
- 03 Your online learning experience**
  - > Lecturers with industry experience
  - < **Study guides and textbooks**
  - < **Assessments**
  - > Online support
- 04 Take the next step**
  - > Process overview
  - > Contact us

# Online support.

We support you by providing a Learning Coach who is there to help you reach your goals by successfully completing your course and giving you access to an expert when so required.

The Learning Coach is your first point of contact and can be reached via email, phone call, WhatsApp or webinar.

Through our functionality that supports the asking of questions and both pro-active and reactive support we have very high completion rates on our programmes.



## Logging on

- Receive username and password
- Log onto your Eduvos Online Course
- Watch orientation videos to guide you on how to navigate the platform



## Academic support

- We provide a learning coach to support and connect with students
- The learning coach monitors the onboarding of the student
- We actively support the student to engage in the course



## Weekly milestones

- Each week has defined topics with supporting material
- Each area builds on the next and is designed to achieve learning
- Assessments and assignments test learning
- Every element has built-in reflections that are marked



## Learning content

- Learning is structured through videos and guides
- Expert lecturers provide guidance on key topics
- Videos are approx. 5 minutes in length
- Students can watch videos as many times as required
- Guides are well-written and designed and highlight relevant learning

## Prospectus Outline.

### NAVIGATION

#### 01 Living your best life

- > Always start with "why"
- > Summary of what you can do afterwards

#### 02 What you will learn and how to apply it practically

- > Course overview
- > Course breakdown
- > Course duration
- > Course start date
- > Entry requirements
- > The cost of your investment
- > Recognition of Prior Learning (RPL)
- > Where this short course can take you

#### 03 Your online learning experience

- > Lecturers with industry experience
- > Study guides and textbooks
- > Assessments

#### < Online support

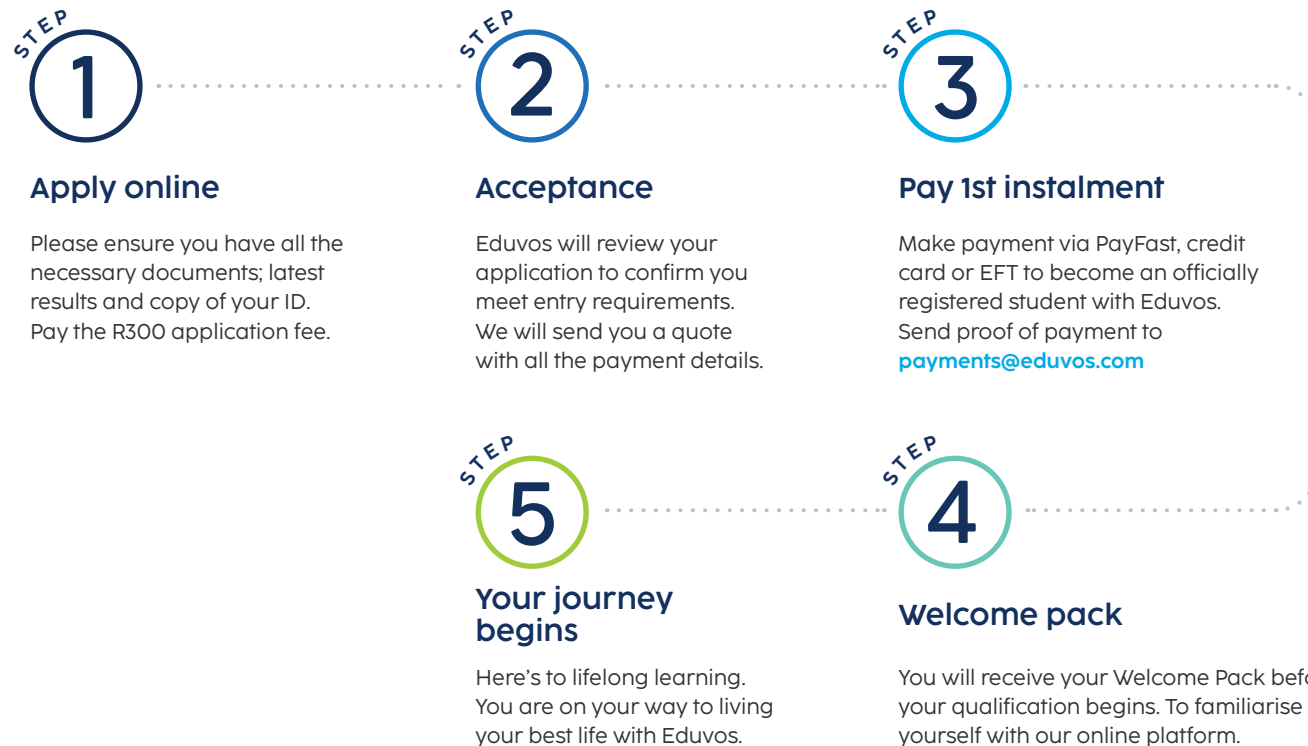
#### 04 Take the next step

- > Process overview
- > Contact us

# 04

## Take the next step

### Process overview.



## Prospectus Outline. NAVIGATION

- 01 Living your best life**
  - > Always start with "why"
  - > Summary of what you can do afterwards
- 02 What you will learn and how to apply it practically**
  - > Course overview
  - > Course breakdown
  - > Course duration
  - > Course start date
  - > Entry requirements
  - > The cost of your investment
  - > Recognition of Prior Learning (RPL)
  - > Where this short course can take you
- 03 Your online learning experience**
  - > Lecturers with industry experience
  - > Study guides and textbooks
  - > Assessments
  - > Online support
- 04 Take the next step**
  - < **Process overview**
  - > Contact us

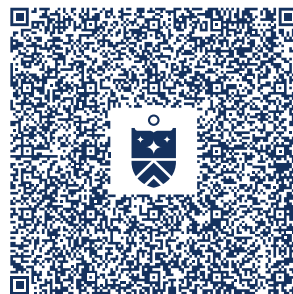


# Your best life is waiting for you.

## Leadership and Emotional Intelligence

Communicate effectively, define your leadership style and connect people to tasks.

Scan here to get in touch:



Connect with us using one of our social platforms.

## Prospectus Outline.

### NAVIGATION

- 01 Living your best life**
  - > Always start with "why"
  - > Summary of what you can do afterwards
- 02 What you will learn and how to apply it practically**
  - > Course overview
  - > Course breakdown
  - > Course duration
  - > Course start date
  - > Entry requirements
  - > The cost of your investment
  - > Recognition of Prior Learning (RPL)
  - > Where this short course can take you
- 03 Your online learning experience**
  - > Lecturers with industry experience
  - > Study guides and textbooks
  - > Assessments
  - > Online support
- 04 Take the next step**
  - > Process overview
  - < **Contact us**

